

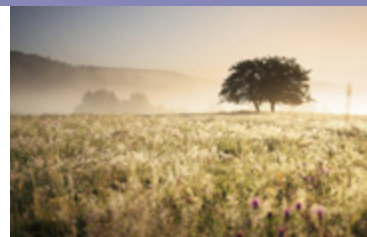
Matte Photo Paper

Photo Matte Archival 230gsm OLM-067

Description:

This Ultra White Photo Matte inkjet paper provides excellent image quality and sharpness, on its reflection free surface.

Applications include; Photography, portrait printing, posters and graphic art reproduction



Weight (GSM)	230
Base Material	Alpha cellulose
Coating Type	Matte
Surface Texture	Smooth matte
Thickness (Microns / inches)	245 / 0.016
Whiteness (CIE)	130
Brightness (TAPPI)	
OBA content	Yes
pH	7.5-9.5
Sheets Size: Availability / sheets per box	DIN A4 / A3 / A3+ / A2 - 100 sheets (US sizes available on request)
Roll Size: Availability / Length / Core size	17" (432mm) / 24" (610mm) / 44" (1118mm) / 60" (1524mm) - 30m - 3" core
Printer/Ink Compatibility	Compatible with all commercial thermal and piezo inkjet printers using water-based dye and pigment-based inks such as Epson, Canon and Hewlett-Packard
Recommended printer Settings	Photo black inks with generic media setting of 'Photo Paper Matte' / 'Premium Matte Photo paper' or similar. ICC colour profiles are available from the website.

Directions for Use:

Paper Handling:

- Avoid touching the coated surface of the paper before and after printing, and wear cotton gloves if necessary.
- Avoid exposure to high temperatures, high levels of humidity and moisture. These factors can affect the drying time of some Olmec™ products.

Paper Storage:

- Remove prints from the tray after printing; do not allow them to be stacked.
- Prints should be allowed to dry in air, preferably left uncovered for 24 hours to allow the residual liquid from the inks to evaporate.
- In cases where stacking is unavoidable, a paper inter leaf should be placed between each print.

Conditions of Use:

- Where possible, all paper should be stored and used within the following range of environmental conditions:
Temperature = 10° - 35° Centigrade
Relative Humidity = 30% - 80%
- Unused paper should be stored in its original packaging, out of direct sunlight under normal climatic conditions.



Olmec™ papers are manufactured and distributed by Innova Art. All recommendations and product indications are for your guidance, and are subject to our test criteria.

PROFESSIONAL PHOTOGRAPHIC INKJET PAPER

www.innovaart.com