

# JETMASTER<sup>®</sup>

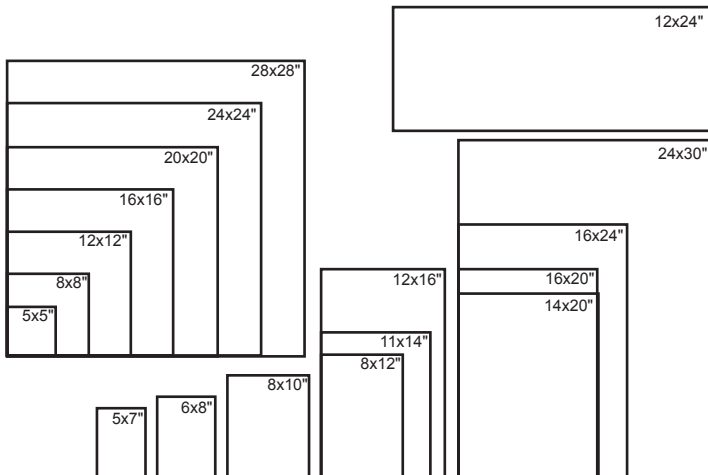
## PHOTO PANEL

### Print - Stick - Display

The **JetMaster Photo Panel** creates effortless impact for your images. A lightweight alternative to solid MDF display blocks, this photo mount has a pressure sensitive adhesive face and is available in a range of sizes with a choice of two smart matte edge finishes. JetMaster Photo Panels are simple to create and can be wall mounted or used as an attractive addition to any desk.

- Stylish frame free photo mount
- Choice of black or white matte edge finish
- Permanent pressure sensitive adhesive

Print Size (Inches)	Depth		Printer Type	Finished face size (Inches)	Quantity Per Box	
	mm	inches				
A4	25	1	Desktop	11.3x7.9	10	Black Edge Only
A3	25	1	Desktop	16.1x11.3	8	
A3+	25	1	17" roll/ A3+ sheet fed	18.6x12.5	8	
5x5	25	1	Desktop	4.7x4.7	10	Black or White Edge
5x7	25	1	Desktop	4.7x6.7	10	
6x8	25	1	Desktop	6.7x7.7	10	
8x8	25	1	Desktop	7.7x7.7	10	
8x10	25	1	Desktop	7.7x9.7	10	
8x12	25	1	Desktop	7.7x11.75	10	
11x14	25	1	17" roll/ A3+ sheet fed	10.7x13.7	10	
12x12	25	1	17" roll/ A3+ sheet fed	11.75x11.75	8	
12x16	25	1	17" roll/ A3+ sheet fed	11.75x15.75	8	
16x16	25	1	17" roll/ A2 sheet fed	15.75x15.75	8	
16x20	25	1	17" roll/ A2 sheet fed	15.75x19.7	8	
16x24	25	1	17" roll/ A2 sheet fed	15.75x23.6	8	
24x24	25	1	24" roll/ A1 sheet fed	23.6x23.6	8	
24x30	25	1	36" roll/ A1 sheet fed	23.6x31.5	5	
<b>Available Whilst Stocks Last</b>						
12x24	25	1	17" roll/ A2 sheet fed	11.8x23.6	8	Black or White Edge
14x20	25	1	17" roll/ A2 sheet fed	13.8x19.7	8	
20x20	25	1	24" roll/ A1 sheet fed	19.7x19.7	8	
28x28	25	1	36" roll/ A1 sheet fed	27.6x27.6	5	

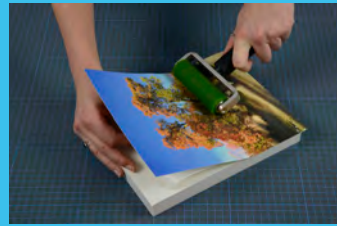
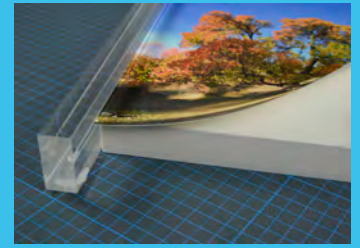


Custom sizes and edge finishes available on request subject to quantity.

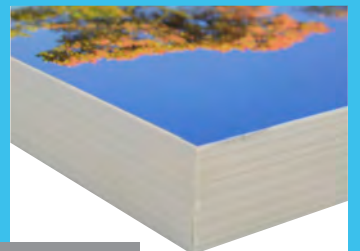
**JETMASTER<sup>®</sup>**  
Image Display Systems



The JetMaster Image Display Systems Range is manufactured and distributed by Innova Art. For more information about Innova and their range of digital media visit [www.innovaart.com](http://www.innovaart.com)



Tabletop or Wall Mounted Display



Choice of Black or White Edging

JetMaster Photo Panels look great when used with Olmec Photographic Papers - Also available from Innova Art

[www.innovaart.com](http://www.innovaart.com)



JetMaster Photo Panel Available From:

[www.innovaart.com](http://www.innovaart.com)

+44 (0) 1992 571775 | [info@innovaart.com](mailto:info@innovaart.com) | +1 856-456-3200

# JETMASTER<sup>®</sup>

## PHOTO PANEL

Search *JetMaster Systems* on YouTube to watch the video

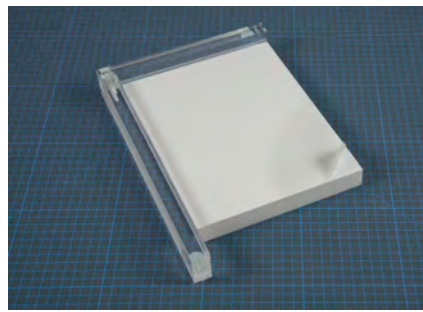
Print - Stick - Display

Assembly Instructions

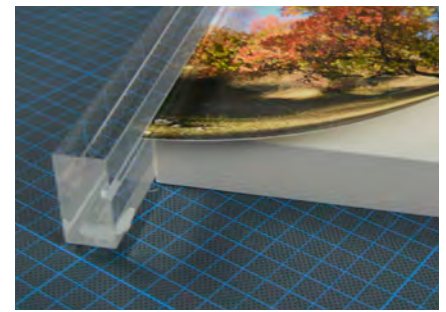
To get the best results print your image to the size specified in the print size column of the table on the previous page. Experiment with a range of finishes on the face of your photo panel by printing your image on different medias.



**Step 1:**  
Peel back a small section of the release liner.



**Step 2:**  
Place the photo panel into the alignment frame and fold back part of the release liner



**Step 3:**  
Position your image using the alignment frame.



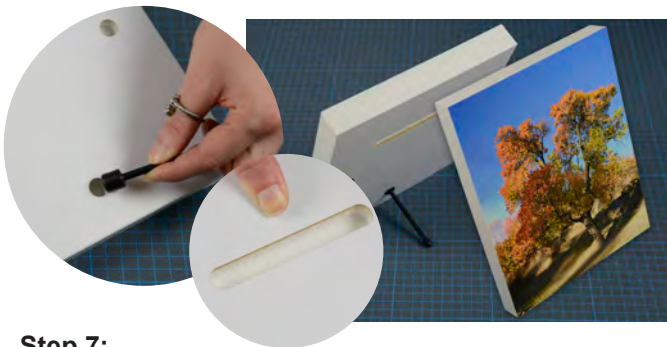
**Step 4:**  
Secure a corner of your print using the area of adhesive you exposed earlier



**Step 5:**  
Remove the rest of the release liner and apply even pressure using a roller.



**Step 6:**  
Place your photo panel face down on a cutting mat and use a rotary cutter or craft knife to remove the excess paper from the edges.



**Step 7:**  
Insert the desk stand into one of the pre drilled holes on smaller frames or use the slits on the back of larger frames to display your finished photo panel



### JetMaster Photo Panel Tools

Cutting Mats, Alignment Tools and Rollers are all available from JetMaster Display Systems, contact us for further details. Rotary Cutters and Craft Knives are available separately.

[www.innovaart.com](http://www.innovaart.com)

+44 (0) 1992 571775 | [info@innovaart.com](mailto:info@innovaart.com) | +1 856-456-3200