

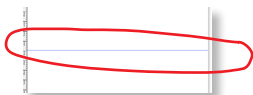
INNOVA

DIGITAL FINE ART PAPER
for PHOTOGRAPHY and ART



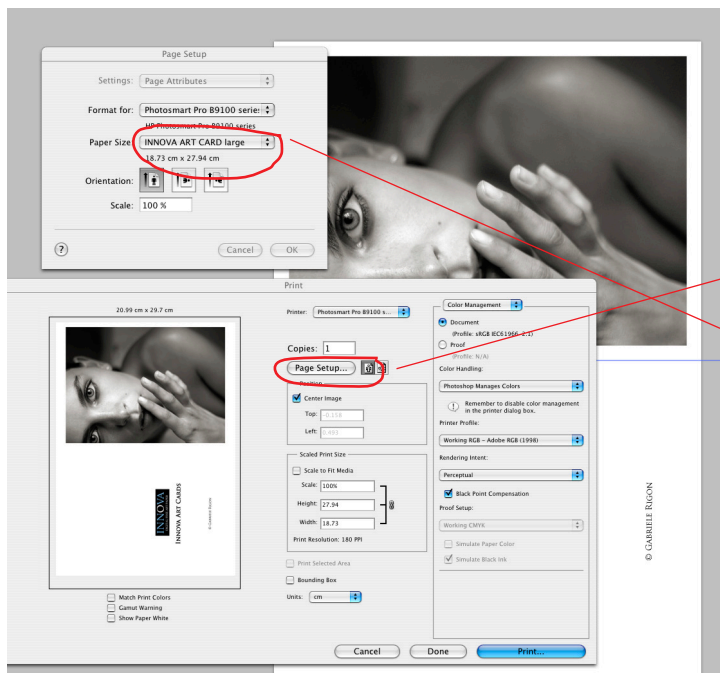
Innova Fine Art Greetings Cards - guidelines for set up and printing

1. The templates provided are designed to be use with Adobe Photoshop, or elements.
2. When you download and then open the file, you should see a blue guideline to indicate where the card will fold. If you can't see this click on View > show > guides.



Guidelines where the fold will be

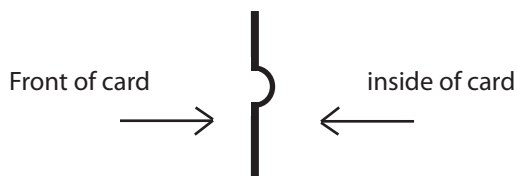
3. The cards are not standard paper sizes, so we recommend you make a custom paper size for the size of the card when flat (14.7x22.8cm or 18.74x28cm) prior to printing.



1. Select page set up

2. Then create your custom page size

4. Feed the cards into your printer with the crease facing inwards as it will fold easier:



5. We have a certain number of ICC profiles to use with the greetings cards in the downloads section of our website. Alternatively use a generic media setting such as 'enhanced matte' paper, 'watercolour' paper or 'fine art' paper.
6. Feed the Art cards into your printer one sheet at a time.